

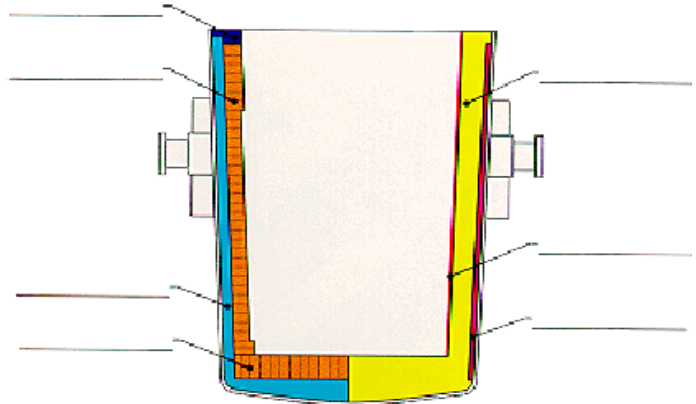
**REFRACTORY SELECTION GUIDE**

*LADLES / TUNDISHES*

*PFANNEN / TUNDISH*

*POCHES DE COULÉE / REPARTITEURS*

*CUCHARAS / DISTRIBUIDORES*



Application	Product Description	Alumina	Silica	Silicon	Magnesia	Chrome	Density g/cm <sup>3</sup>	lb/ft <sup>3</sup>	°C / °F Limit
Anwendung	Produktbeschreibung	Al <sub>2</sub> O <sub>3</sub>	SiO <sub>2</sub>	Carbide	MgO	Cr <sub>2</sub> O <sub>3</sub>	Dichte		°C / °F Grenze
Application	Description de Produit			SiC			Densité		°C / °F Limite
Aplicación	Descripción de Producto	%	%	%	%	%	Densidad		°C / °F Limit
Floor / Sidewall	DRI-VIBE® 512A	78.3	1.4	13.1	-	-	2.72	170	1705 3100
Boden / Seitenwände	LADLE VIBE® 60A	57.9	38.9	-	-	-	2.16	135	1650 3000
Sole / Paroi	LADLE VIBE® 82A	78.3	11.6	-	-	-	2.51	157	1760 3200
Piso / Paredes	LADLE VIBE® 88A	86.5	5.5	-	-	-	2.55	159	1760 3200
	LADLE-LITE 123A	74.0	17.4	-	-	-	2.02	126	1650 3000
	LCF 384A	81.0	12.5	-	-	-	2.72	170	1705 3100
	LADLE KAST	55.9	37.8	-	-	-	2.25	140	1650 3000
	CW 7929 CASTABLE	69.8	24.6	-	-	-	2.60	162	1595 2900
	METAL KAST 90	93.8	4.9	-	-	-	3.04	190	1815 3300
	QUICK CAST® 72	68.8	25.5	-	-	-	2.72	170	1705 3100
	QUICK CAST® 82	78.2	17.2	-	-	-	2.88	180	1705 3100
	V-CAST® HLM 85	87.7	8.2	-	-	-	2.88	180	1760 3200
	V-CAST® HLM 90	92.3	4.2	-	-	-	3.20	200	1760 3200
	V-CAST® 699A	68.5	28.2	-	-	-	2.64	165	1705 3100
	MATRIPUMP 60	62.0	32.8	-	-	-	2.60	162	1705 3100
	MATRIPUMP 80	81.0	12.7	-	-	-	2.82	176	1705 3100
	APR PRECAST SHAPE								
	APR LADLE BOTTOMS								
Maintenance	MINRO-AL® PLASTIC A85	81.0	11.7	-	-	-	2.88	180	1705 3100
Reparaturmasse	MINRO-AL® PLASTER A87	81.0	11.7	-	-	-	2.88	180	1705 3100
Entretien	MINRO-AL® PLASTIC A91	87.4	7.1	-	-	-	3.04	190	1760 3200
Mantenimiento	MINRO-AL® PLASTER A93	87.4	7.1	-	-	-	3.04	190	1760 3200
	SCOTT-RAM MORTAR A96	83.9	0.3	-	-	9.4	-	-	1760 3200
	STEEL-PAK 90CR	73.1	12.3	-	-	7.3	2.93	183	1760 3200
	CW 70 HS PLASTIC	68.4	24.6	-	-	-	2.67	166	1760 3200
	CW 85 HS PLASTIC	83.8	9.00	-	-	-	2.90	182	1760 3200
	CW 90 HS PLASTIC	89.1	6.2	-	-	-	3.09	193	1815 3300
	CW 85 HS SEAL	84.8	10.2	-	-	-	2.77	175	1760 3200
	CW 90 HS SEAL	91.9	5.0	-	-	-	2.86	178	1815 3300
	AC PLASTIC	83.3	3.6	-	-	9.8	3.18	198	1815 3300
Coatings	T-COAT® 691M	1.9	36.6	-	53.3	-	2.00	125	1650 3000
	T-COAT® 692M	-	-	-	56.0	-	2.00	125	1650 3000
	T-COAT® 689M	3.5	8.5	-	83.0	-	2.05	128	1650 3000
	T-COAT® TWF 83	2.0	8.7	-	85.8	-	2.00	125	1650 3000
	LADLE WELL	8.1	64.0	-	-	-	1.81-1.91	113-119	1540 2800